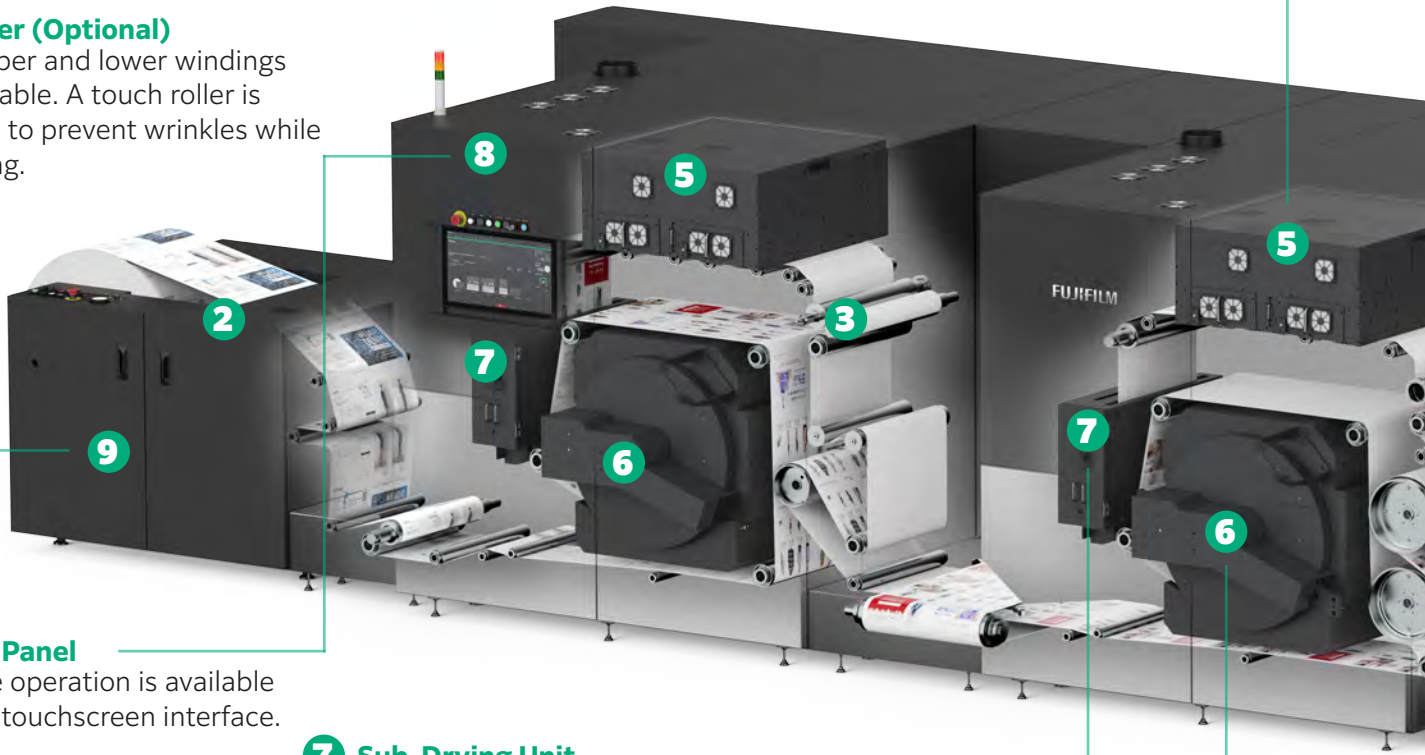
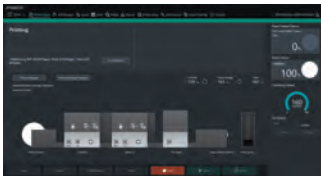


A look inside

9 Rewinder (Optional)
Both upper and lower windings are available. A touch roller is installed to prevent wrinkles while rewinding.



8 Control Panel
Machine operation is available through touchscreen interface.



7 Sub-Drying Unit
Each tower has IR heaters installed, which efficiently dries the ink, minimizing paper deformation.

6 Dryer
Two types of drying technology are installed: heat drum and heat air dryer.

10 Ink Pack Cart
Four-color ink packs are installed at the back of the printer. Each ink pack weighs approximately 20 kg, but replacement can be performed easily using the cart.



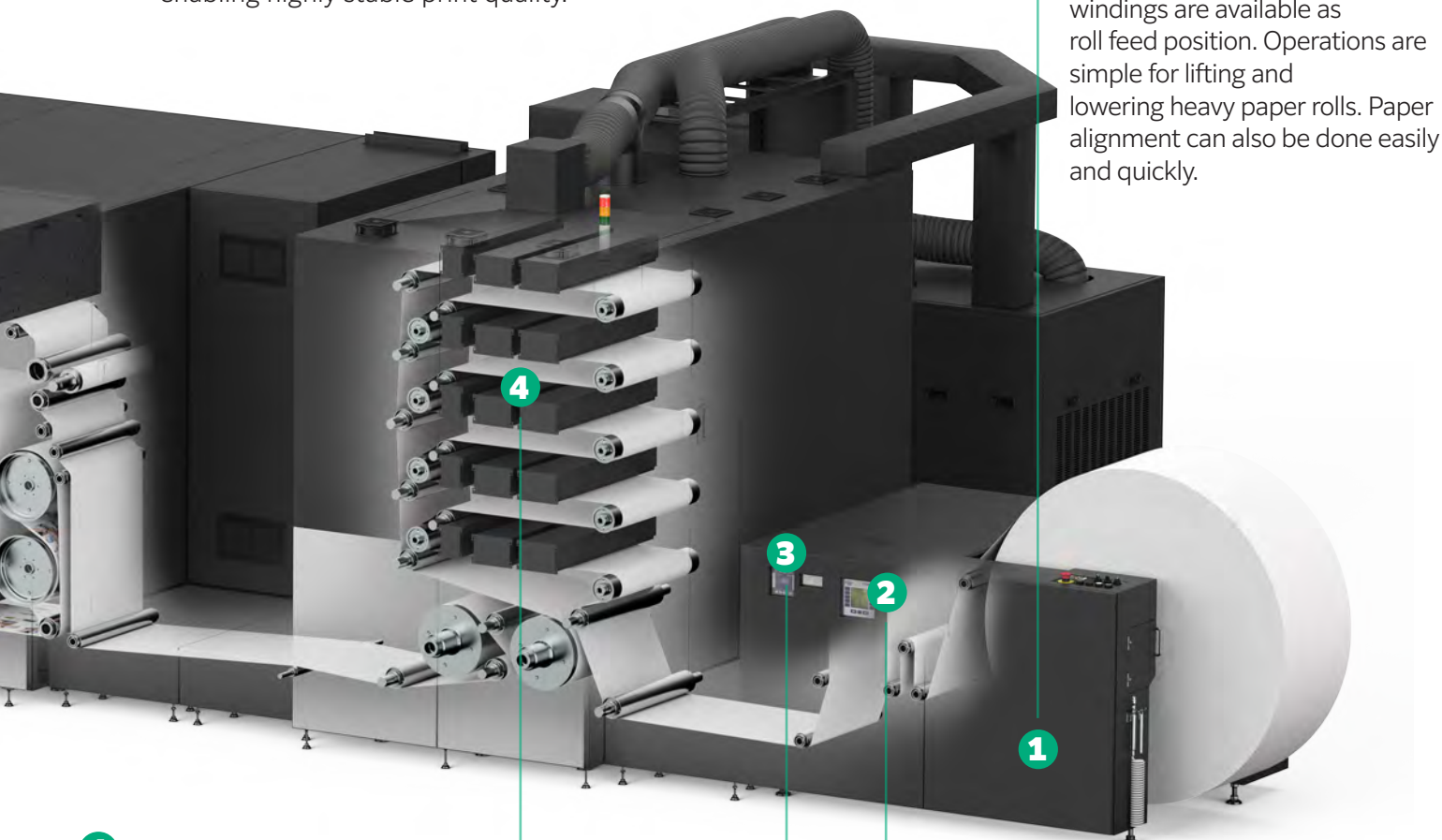
11 Chiller
The chiller circulates cold water to cool the paper after drying.
*Three chillers are required.



5

Print Head Box

The print head supports 1,200 x 1,200 dpi printing. A single dot can be expressed using up to three gradations, allowing smoother density transitions. In addition, the print head is water-cooled, enabling highly stable print quality.

**1 Unwinder**

Both upper and lower windings are available as roll feed position. Operations are simple for lifting and lowering heavy paper rolls. Paper alignment can also be done easily and quickly.

4 Paper Stabilizer

The pre-drying process regulates the amount of moisture in paper, allowing high productivity and print quality.

2 Tension Controller

Stabilizes paper feed even at high printing speeds by maintaining constant paper tension.

3 Edge Guide

Automatically adjusts paper meandering, allowing stable printing.

Slack Web Unit (Optional)

Printer can also be connected to 3rd party finishers (loose tension type) by using the slack web unit. The unit applies tension to roll paper instead of the rewinder.