



Step Into The Future Of Print

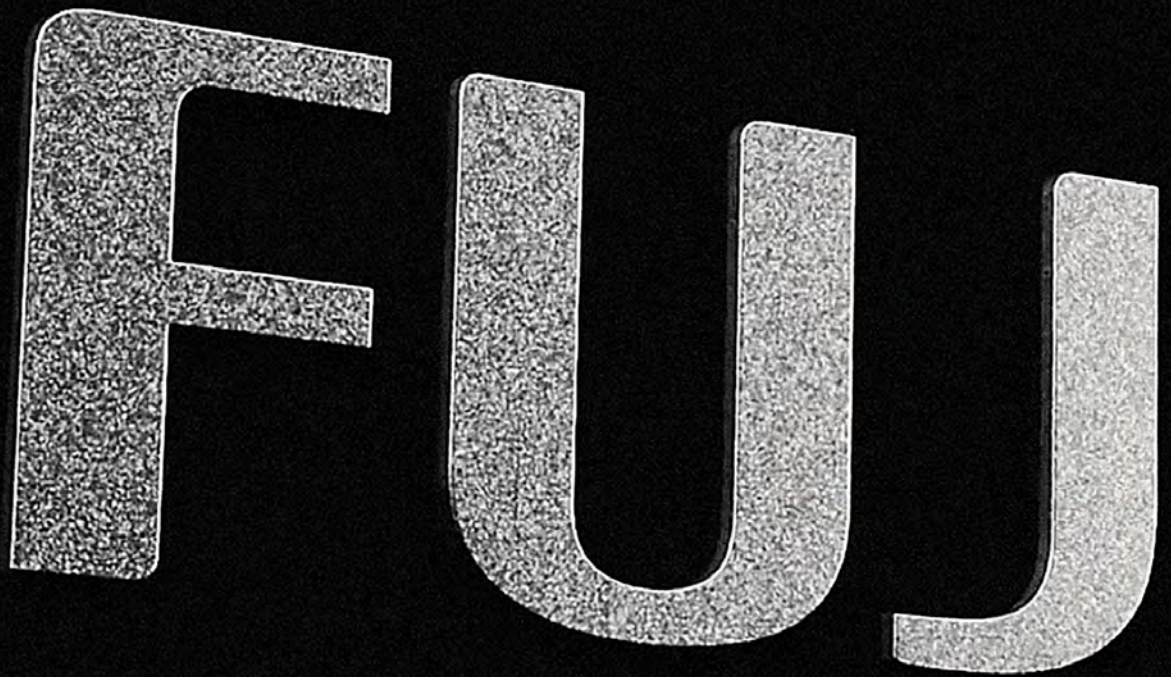
J Press
1160CFG



Product Guide

Why Fujifilm?

Fujifilm believes that our collective future of print is based on dynamic collaboration. Therefore, you deserve a partner who understands where you have been, where you are currently, and where you want to go. Fujifilm's business is anchored to the traditions of our industry and the historical relationship we have with the print community. When we combine our history of innovation and our commitment to product development with our enthusiasm for our customers' success, together we can achieve any vision you have for your company.



FUJIFILM

History of Innovation

The Fujifilm difference is supported by 4 pillars of strength. Our long history and countless milestone achievements are proof of both our longevity and dedication to this amazing industry. Fujifilm grew up in this business and there is no substitute for the collective experiences we have had and the depth to our understanding of the business. Our portfolio truly spans the entire print industry and is purely the result of the other pillars. Our history of innovation drives a culture of progress.

Global Strength

The culture within Fujifilm is rooted in respect and innovation. The care with which we engage clients and investment in solutions has been critical to our ability to create advances in technology and infrastructure. Being devoted to traditional business processes allows us to align with traditional hierarchy while also being innovative and disruptive. Our approach is born from mutual respect for others and a willingness to drive change.

Local Partner

Fujifilm Graphic Communication Division (GCD) is full of passionate team members. While globally, Fujifilm invests in Research & Development at a frenetic pace (\$7 million dollars per day), locally, Graphics Communication Division (GCD) embraces a culture of relentless service & support. When it comes to innovation, we develop all our technology in house including printheads, inks, inkjet technology and image processing systems. And there is no better place to witness this than our remarkable Innovation Lab. Located in our North American Headquarters in Hanover Park, Illinois, just 30 minutes west of Chicago, the Fujifilm Graphics Innovation Hub (GIH) is here to showcase for you the newest innovations from Fujifilm's Graphic Communication Division. The GIH demonstrators have industry experience and are experts in the operation and use of our print equipment.

Broad Portfolio

The Fujifilm portfolio is broad and is the result of our history of innovation, our corporate reach, and our local connections. The breadth of our portfolio aims to fulfill every sector of the print market and continues to grow as our customer's needs grow. We aim to support the most progressive leaders, the maniacally detailed operators, the environmentally conscious, and the creatives that realize the impact that print can have on brand equity.



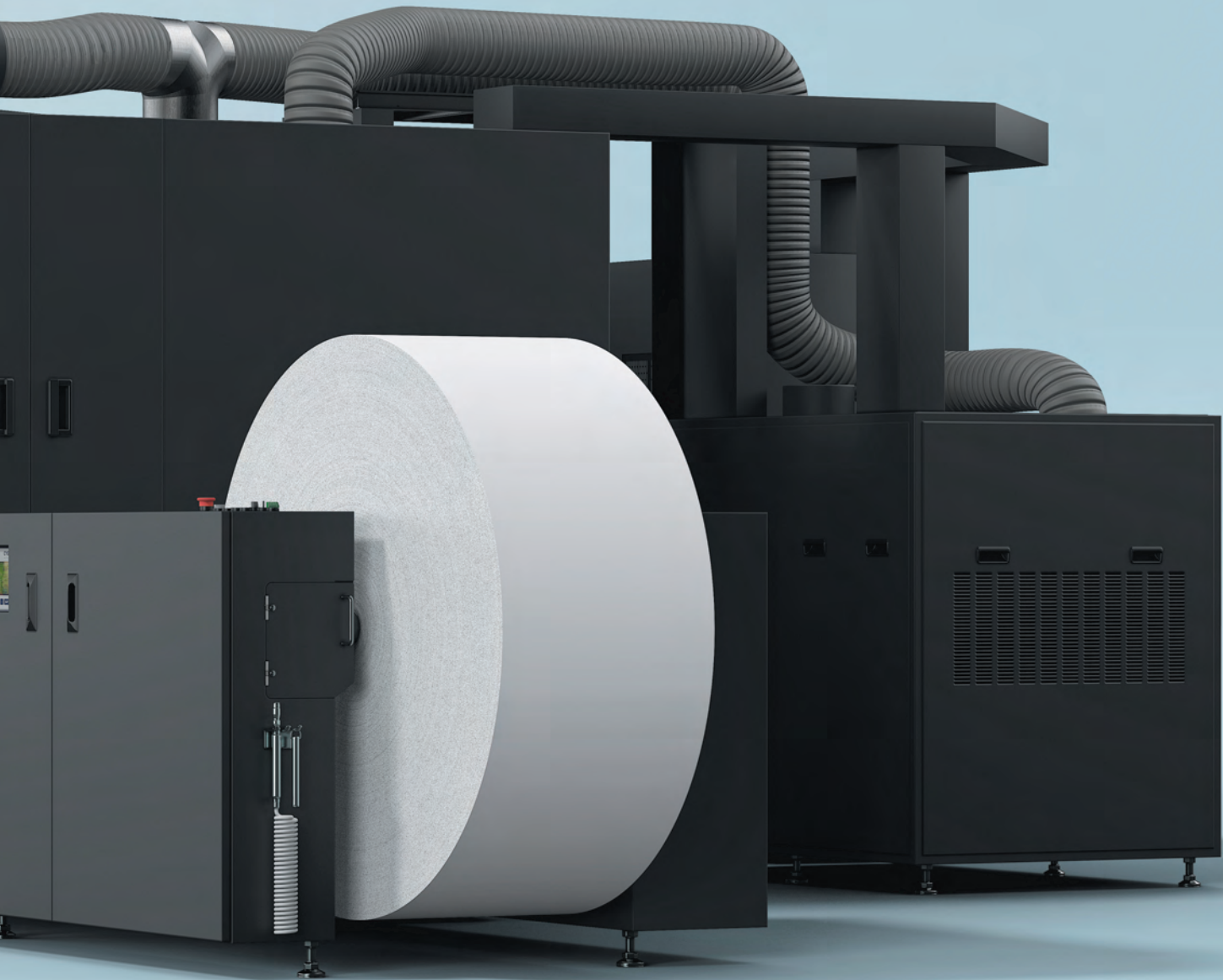
Rolling out the next generation J Press



Why J Press 1160CFG?

With over 300 J Press installations worldwide, more and more printers and their customers are now realizing what you can achieve with the capabilities built into this groundbreaking inkjet technology. The 4th generation J Press 750HS achieves up to 5,400 impressions per hour with no plates and no make ready. This sheet-fed digital inkjet press produces better than offset quality and helps printers tackle paper the changing landscape of run lengths, lead times and variable data.

Now J Press is ready to take on the next frontier, high quality roll-to-roll inkjet. Bringing the best of the J Press series to the high quality roll-to-roll space, Fujifilm is excited to preview the North American launch of the J Press 1160CFG, a high-speed continuous feed color inkjet printing system for the direct mail and commercial printing markets.



Digital transformation

We are experiencing digital transformation in all aspects of our lives and print is no exception. These transformations take on multiple phases and are led as much by technology as they are our adoption of that technology.

The Fujifilm J Press was a groundbreaking digital inkjet platform. Eliminating the need for plates, setup and make ready time. The J Press 750HS (now the 4th generation) can significantly reduce the costs associated with small to medium sized print runs, streamline variable data jobs and effortlessly match color, all without losing a step on offset print quality.

As we see in industry trends, print runs are getting shorter and deadlines are getting tighter. Digital printing not only supports this trend, it also enables it. Allowing printers to offer smaller minimums, faster turnarounds and lower pricing, the J Press series empowers the next generation of markets and printers to solidify their partnership.



Built for your business

Going all digital

If you are going all in on digital and are ready to say goodbye to plates and make ready setup time, Fujifilm offers the best of toner and inkjet with the Revoria Press series and J Press series. Our experts can help assess your requirements and recommend the best options to grow your business.

Complimenting existing offset equipment with new digital capabilities

If you are looking to add short run, fast turnaround or inline specialty colors and embellishments to your offset production Fujifilm can help you find the right balance and the right solution to fit your needs.

Updating existing digital equipment

If you are not new to digital, but you are ready for upgrade, see the Fujifilm difference. It is not only about our technology, Fujifilm service and support creates a partnership with our clients to help their businesses expand and their profits grow.

Inkjet Production Presses:

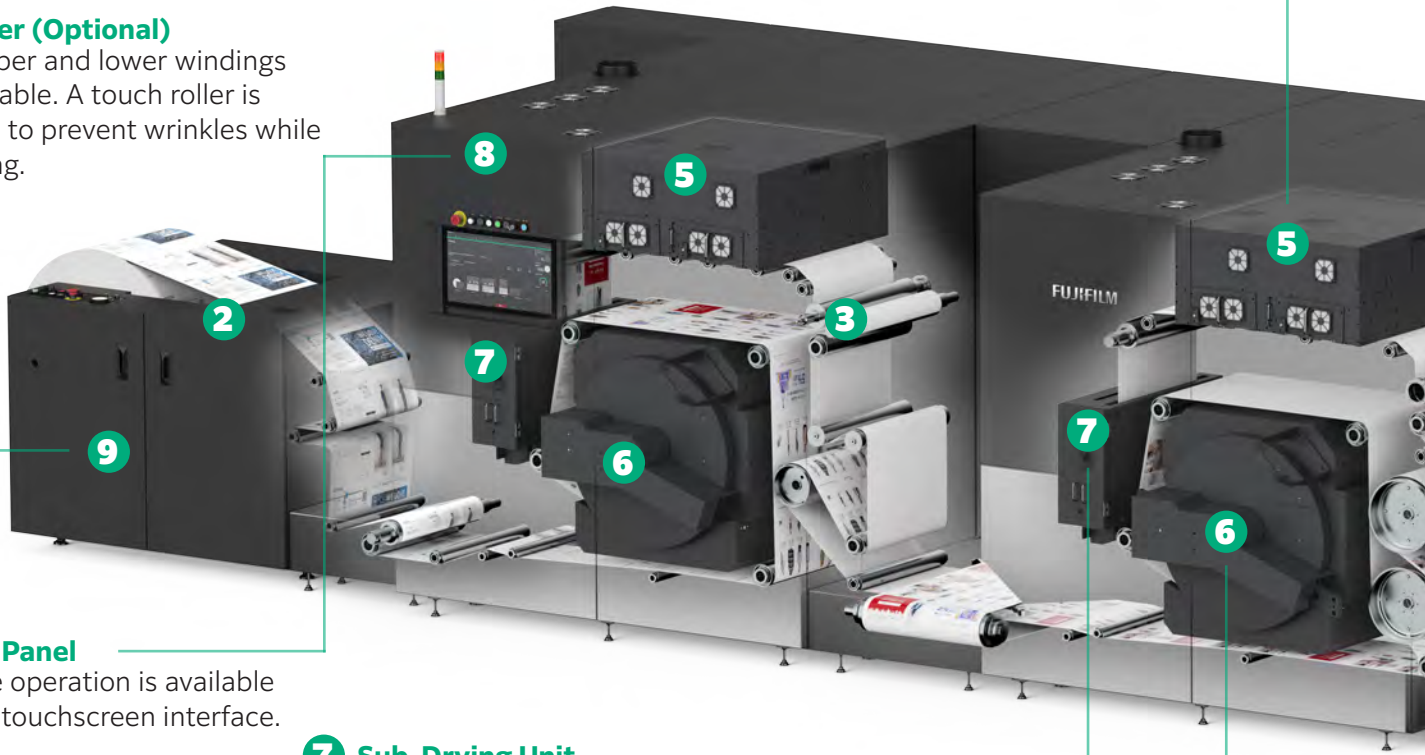
The J Press series is a great choice for ultra-high quality and productivity. Choose from the 750HS sheet fed model or the new J Press 1160CFG roll-to-roll model.

Toner Production Presses:

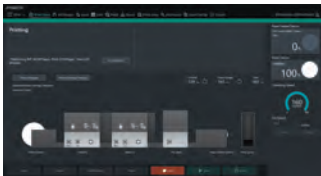
The Revoria Press series is a great choice for ease of use and short run, fast-turnaround requirements. Choose from the Revoria Press PC1120 13 x 19 press or the new Revoria Press GC12500 which delivers a larger 26" x 29.5" sheet size with almost 3.5 times the area and more than double the productivity.

A look inside

9 Rewinder (Optional)
Both upper and lower windings are available. A touch roller is installed to prevent wrinkles while rewinding.



8 Control Panel
Machine operation is available through touchscreen interface.



7 Sub-Drying Unit
Each tower has IR heaters installed, which efficiently dries the ink, minimizing paper deformation.

6 Dryer
Two types of drying technology are installed: heat drum and heat air dryer.

10 Ink Pack Cart
Four-color ink packs are installed at the back of the printer. Each ink pack weighs approximately 20 kg, but replacement can be performed easily using the cart.



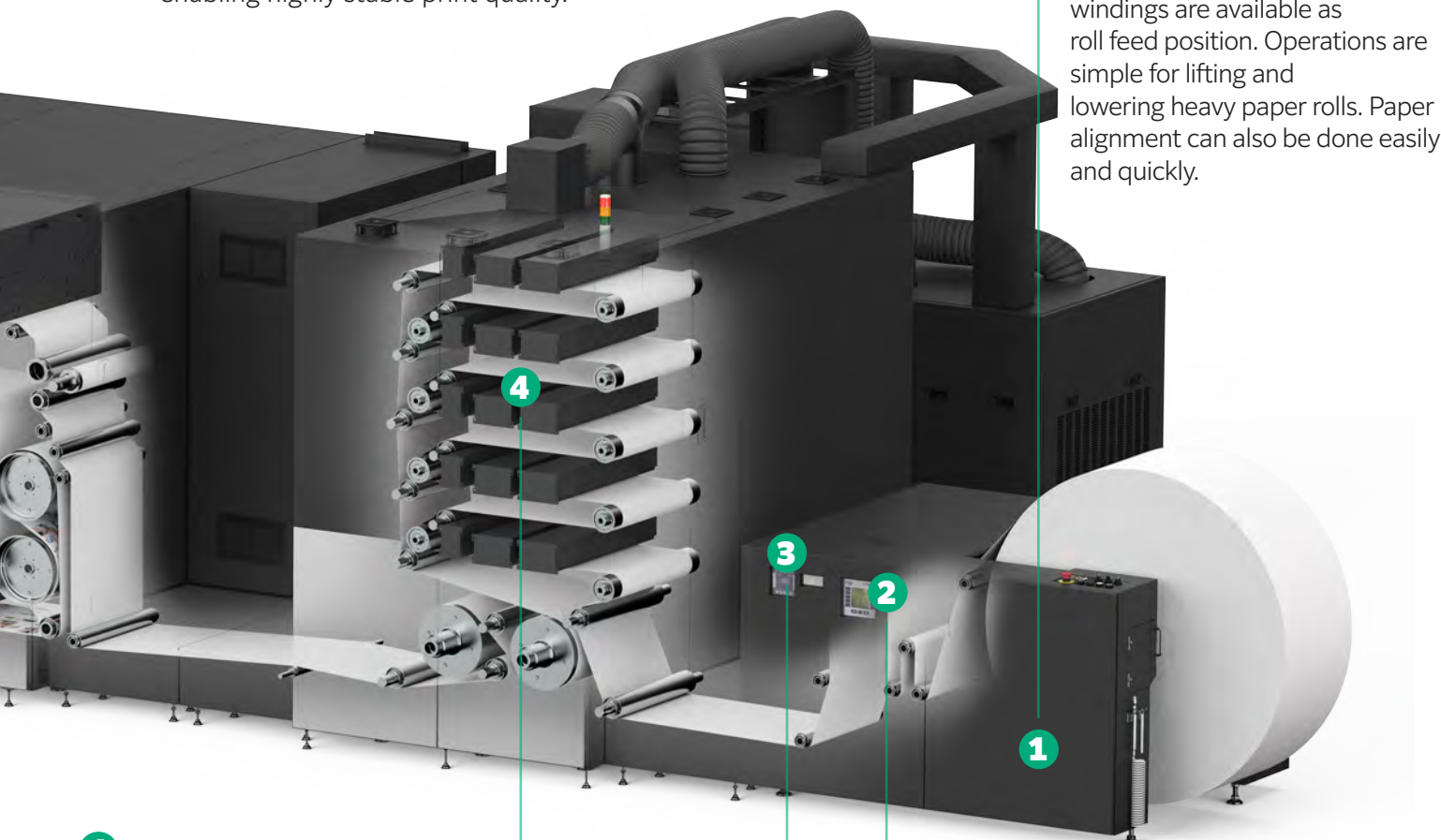
11 Chiller
The chiller circulates cold water to cool the paper after drying.
*Three chillers are required.



5

Print Head Box

The print head supports 1,200 x 1,200 dpi printing. A single dot can be expressed using up to three gradations, allowing smoother density transitions. In addition, the print head is water-cooled, enabling highly stable print quality.

**1 Unwinder**

Both upper and lower windings are available as roll feed position. Operations are simple for lifting and lowering heavy paper rolls. Paper alignment can also be done easily and quickly.

4 Paper Stabilizer

The pre-drying process regulates the amount of moisture in paper, allowing high productivity and print quality.

2 Tension Controller

Stabilizes paper feed even at high printing speeds by maintaining constant paper tension.

3 Edge Guide

Automatically adjusts paper meandering, allowing stable printing.

Slack Web Unit (Optional)

Printer can also be connected to 3rd party finishers (loose tension type) by using the slack web unit. The unit applies tension to roll paper instead of the rewinder.

Take control of your paper

Paper Stabilizer

Paper is often the most difficult variable in the printing process to control. It can react differently depending on the environment's humidity, temperature and other outside factors. The new Fujifilm J Press 1160CFG features an integrated paper stabilizer that helps regulate the paper's humidity and temperature before printing.

Before entering the imaging section, paper goes a pre-drying process which minimizes rapid paper expansion and contraction within the press. The paper stabilizer helps to reduce paper curling and misalignment, ensuring a smooth and stable paper feeding thereby increasing registration accuracy, improving print quality and reducing waste.





Media Flexibility

The J Press 1160CFG paper stabilizer helps expand media compatibility including both common offset coated and uncoated stocks. You can also print on both thinner and thicker stocks. This means that a printer can take advantage of current paper stocks, simplifying inventory and reducing costs.

High Registration Accuracy

By regulating the amount of moisture in the paper before printing, the J Press 1160CFG can create consistent front and back image quality and highly consistent front and back registration.

Advanced Drying Technology

With the enhanced drying technology the J Press 1160CFG, the printer delivers high-speed printing of 80 meters per minute, even on thick coated paper.*¹

The drying technology is also effective against waviness and wrinkles on thin paper by minimizing paper expansion and contraction.



Direct & Commercial mail that delivers

Small & profitable

In the print industry, there has been a noticeable trend towards shorter print runs in recent years. Digital printing eliminates the need for large print runs to make the process cost-effective. This flexibility is advantageous for small businesses, startups, or organizations needing only a limited quantity of printed materials. It also increases the profitability for the printer by adding to their print offerings.

Variable data printing

Digital printing enables customization of each printed piece, allowing for personalized content, such as names, addresses, or images, without slowing down the printing process. This is valuable for direct mail campaigns, personalized marketing materials, and targeted communications.





Finish strong

Fujifilm has been working with finishing partners to ensure the J Press 1160CFG will support multiple options for inline, offline and nearline finishing. Having multiple finishing options for the J Press 1160CFG enables print providers to offer a wider range of services, improve production efficiency, maintain quality standards, and stay competitive in a dynamic and demanding industry landscape. That is why Fujifilm will continue to expand our finishing partnerships to ensure you have the best options from start to finish.

Technical specifications

Print functions	
Printer configuration	Twin Engine Duplex
Colors capability	Full Color
Printing method	Piezoelectric drop-on-demand inkjet method
Printing resolution	Image Quality Priority : 1,200 x 1,200 dpi Speed Priority : 1,200 x 600 dpi
Halftone	3 levels per drop
Warm-up time^{*1}	15 minutes or less (when the room temperature at 73°F)
Continuous print speed	Image Quality Priority : 262.5 ft/min Speed Priority : 525 ft/min
Paper size^{*2}	6" to 20.5" w
Paper weight	64 to 250 gsm
Paper feed	Unwinder connected (maximum roll diameter: 50")
Paper discharge	Rewinder ^{*5} connected (maximum roll diameter: 50")
Feeding speed	Maximum 525 ft/min
Operating noise^{*6}	In operation: 79 dB(A)
Input Power supply	Three-phase AC200 V +/-10 %, 50/60 Hz common, Power Capacity: 87 kVA (Printer) Three-phase AC400 V +/-10 %, 50/60 Hz common, Power Capacity: 208 kVA (Printer) Three-phase AC200 V +/-10 %, 50/60 Hz common, Power Capacity: 26 kVA (Paper Stabilizer) Three-phase AC400 V +/-10 %, 50/60 Hz common, Power Capacity: 104 kVA (Paper Stabilizer)
Dimensions	43.0' x 14.3' x 7.8' (With rewinder) 33.8' x 14.3' x 7.8' (With slack web unit. Without rewinder)
Installation space^{*7}	56.1' x 20.7' (With rewinder) 46.9' x 20.7' (With slack web unit. Without rewinder)
Weight^{*7}	29,664 lbs (With rewinder) 26,679 lbs (With slack web unit. Without rewinder)

*1: Time may vary depending on the installation environment.

*2: A margin of .59" on left and right edges of paper is the unprintable area when the Gripper Roller is set on the edge area of the paper.

*3: Optional.

*4: Measurement based on the ISO11204 standard.

*5: Unwinder (standard), rewinder (optional), slack web unit and other necessary units are connected. Excludes roll paper (feed/rewind), attention light, and chiller. Includes inks.

*All values are targets and subject to change without notice. The name FUJIFILM and the FUJIFILM logo are trademarks of FUJIFILM Corporation. All other trademarks shown are trademarks of the owners. All rights reserved.

Control color with cloud based color management

Deliver high-quality, consistent and accurate color output while optimizing workflow efficiency and productivity

ColorPath, Fujifilm's cloud-based color management system, allows printers to create optimized color profiles and calibrations to print to various standards, and provides tools to ensure that over time the standards are continually adhered to, all while achieving superior print results and meeting the demanding requirements of today's print market.

Manage and monitor color performance

The ability to provide color managed output is also managed within XMF. However, the key to good color management is the creation of accurate device link color profiles, the ability to easily print to ISO standards, and above all to have a system that makes it easy to check and verify that standards are continuously being met. All of this and more is achieved with XMF ColorPath, Fujifilm's cloud-based color management solution. Optimized curve data and ICC profiles can be quickly and easily created in the cloud and deployed for everyday production within XMF Workflow.

Rest assured you are in safe hands

XMF Workflow is a proven workflow solution for both offset and digital print production. Thousands of customers all over the world rely on various components of XMF to manage their production needs every day.

ColorPath™



Color Management in the Cloud®

SYNC™

Key features

- Cloud-based color management
- Align offset and digital presses to ISO or G7 standards
- Optimize ink usage while maintaining conformance to ISO and G7 standards
- Create optimized color profiles to allow for GRACoL and FOGRA standard proofing
- Verify if digital proofs and prints are within the tolerance limits of industry standards

G7® and GRACoL® are trademarks of Idealliance



**Support you can
count on**



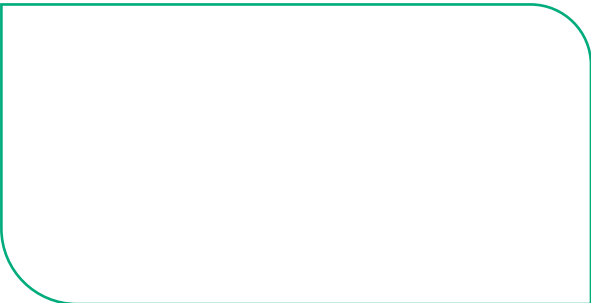
Service & support essentials

Our commitment to delivering unrivalled service and support helps to build the long-term customer relationships that are a hallmark of partnering with Fujifilm.

- Professional installation
- Operator training
- Color management
- Workflow and RIP software integration
- Professional services
- Online support portal
- Strategically located support team



Find more information at:
print-us.fujifilm.com



FUJIFILM Graphic Communication Division



@FujifilmGCD



@FujifilmGCD