



PRINT Performance

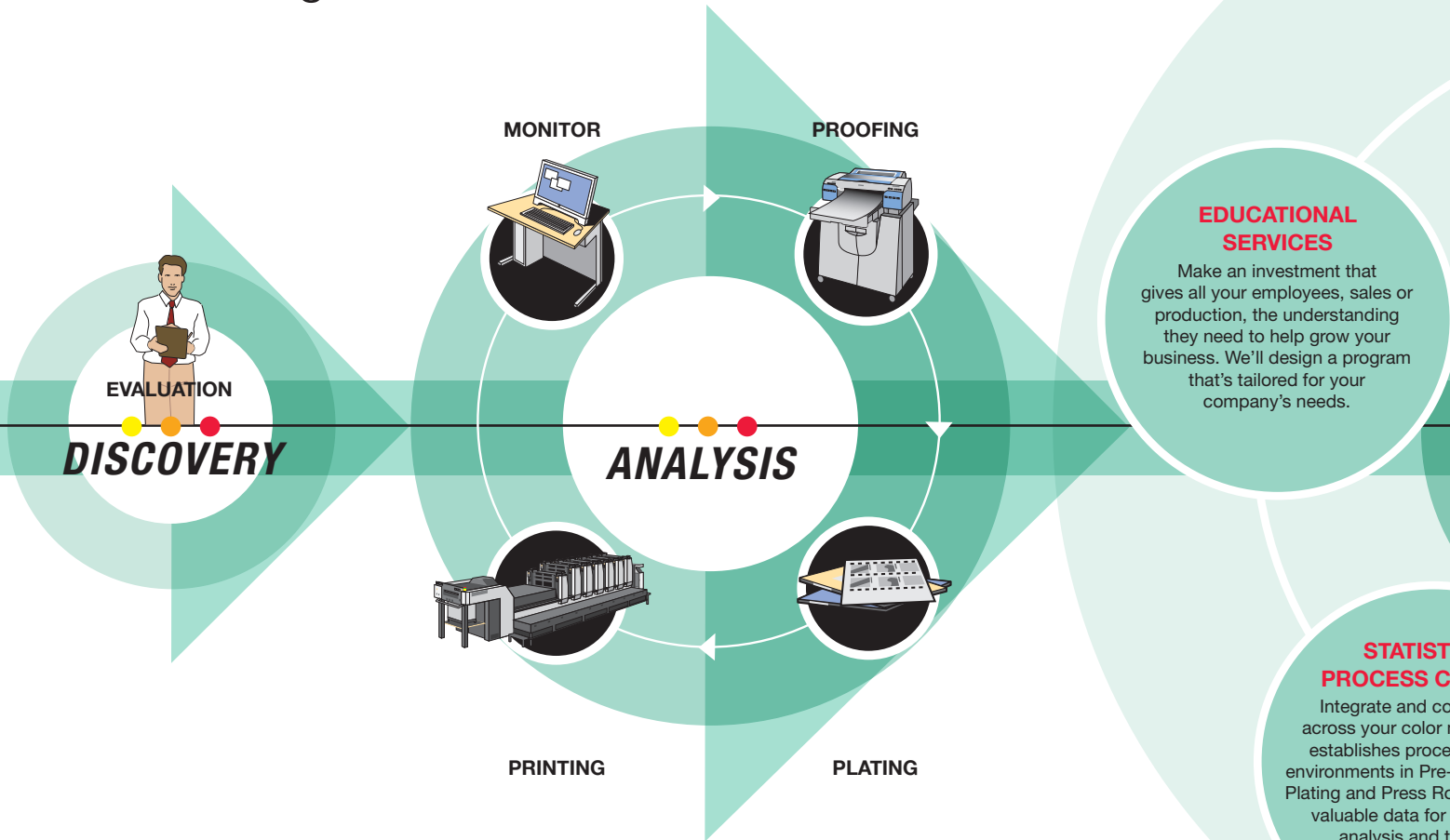
PRODUCT BROCHURE

- ▶ Standardized process and quality controls
- ▶ Integration across platforms
- ▶ Communication between departments and facilities
- ▶ Monitoring to reduce waste and downtime
- ▶ Valuable data used in strategic decision making

DISCOVERY ▶

ANALYSIS ▶

Achieve Print Excellence in Today's Transitioning Print Environment



The modern printing environment offers more opportunities and challenges than ever. With new software, equipment updates and growing client demands, it's vital to simplify your processes while improving your products, services and your ability to price competitively.

Trust the Fujifilm Print Performance Team to discover and implement flexible, best-in-class processes. Comprised of a group of print industry professionals, the Print Performance Team brings expert services, award-winning tools and effective training. We'll help you to maximize your profitability and achieve superior production through efficiencies and more consistent, high-quality output, whether you're in a single- or multi-site environment.

DISCOVERY

The Discovery process is a study of your current situation to reveal the processes and technology that you currently have in place. Once the Discovery process is completed, a report is delivered that documents the current and desired situations, and clarifies critical issues.

ANALYSIS

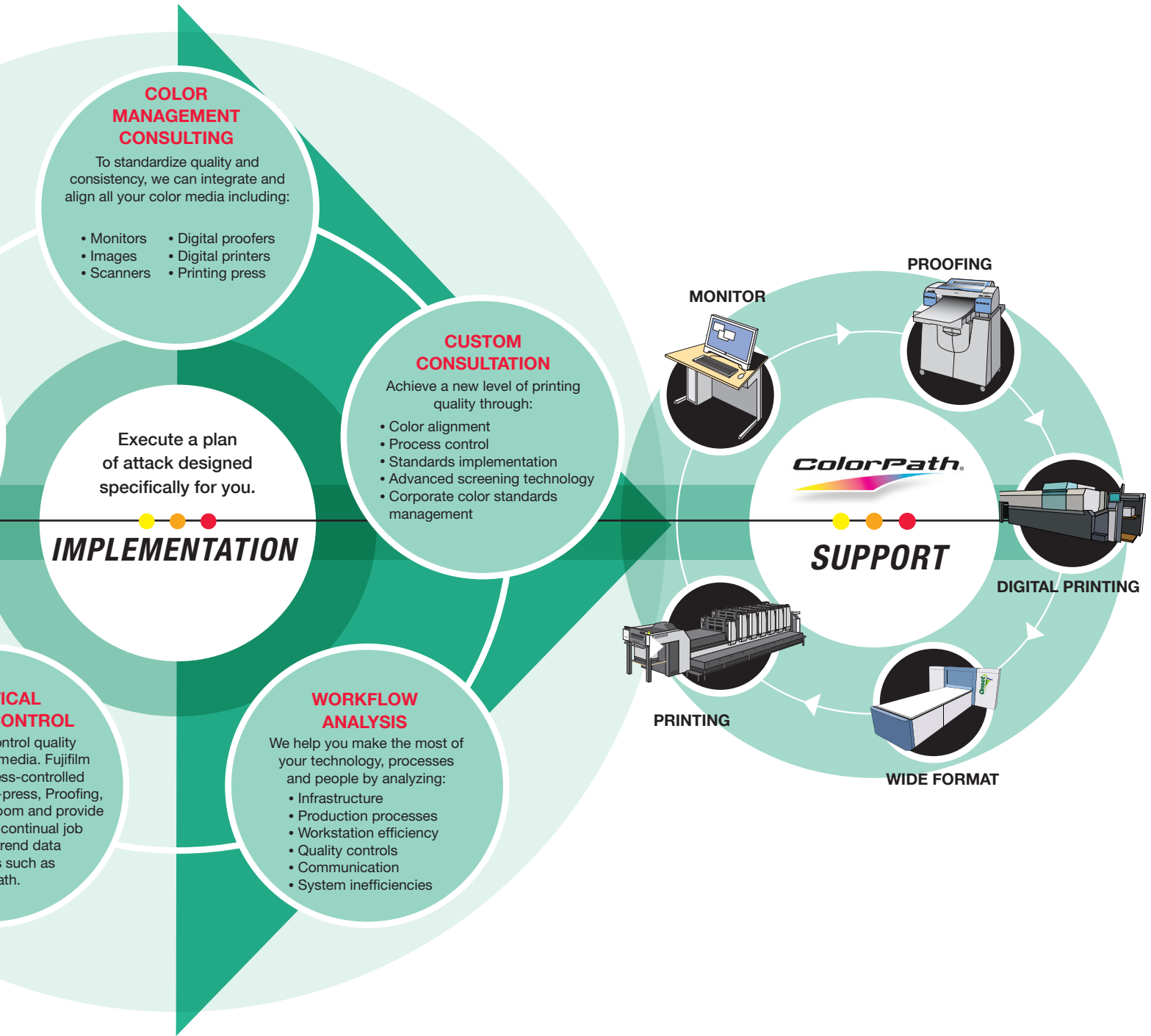
The Discovery information is analyzed to provide flexible solutions to improve existing workflows, procedures, quality levels, efficiencies and profitability. We generate measurable metrics and a tangible Return on Investment (ROI) to help evaluate the cost against the results.

IMPLEMENTATION

At this stage, effective implementation, experience and Print Performance technology, e...

IMPLEMENTATION

SUPPORT



IMPLEMENTATION

The Print Performance Team partners with your team members to execute implementation. We work closely with your team to incorporate their first-hand and to discover any uncovered issues. During Implementation, we launch your Print Performance Plan with a strategy to introduce or improve processes, better enable your team to eliminate any waste and provide valuable data for strategic decision making.

SUPPORT

Your Print Performance Plan continues well after Implementation. On-going Support is critical to the continuation of processes that enable cost reductions and increase efficiencies. Members of your Print Performance Team can provide training, education and technical support.

DISCOVER THE BENEFITS OF PRINT PERFORMANCE

UNMATCHED EXPERTISE. NATIONWIDE SERVICE.

As part of the nation's most comprehensive group of print technology and workflow experts, the Print Performance Team has access to and incorporates the latest technology. To keep our customers up and running at the highest possible level, we bring an unmatched heritage of color expertise, exacting quality standards and a nationwide network of over 200 technical experts.

For Print Performance information and support call 800-359-3854.

COLOR MANAGEMENT

We'll help you learn how to communicate color needs clearly with your customers and then produce and reproduce color print accurately, predictably and repeatably. We can help you to save time and materials on conventional press make-readies. Allow for load-balancing between offset presses and digital engines. Help you understand and determine when, where and how to establish and maintain efficient color printing processes.

G7

Are you taking advantage of the G7 process or looking to become qualified as a Master G7 Printer? We can teach you the process, provide the tools to do it quickly and inexpensively, and maintain it effectively. Fujifilm has more Certified G7 Experts than any other graphic arts solutions supplier in the world. And, we've completed over half the Master G7 Printer Qualifications in the United States.

PROCESS CONTROL

Our award-winning ColorPath Sync tools allow you to easily produce accurate and precise G7- and ISO-compliant color in a fraction of the time of other solutions. Create and maintain G7 and ISO plate curves with ColorPath Sync Align. Create and maintain optimized Device Link Profiles with ColorPath Sync DLP. Stabilize your press runs and improve consistency through ink optimization with ColorPath Sync IO. Validate the accuracy of your work and materials with ColorPath Sync Validation. And do it from anywhere in your shop, between multiple locations across the country, or even across the globe — true Color Management in the Cloud.

WORKFLOW MANAGEMENT

Get the maximum efficiency from your workflow process through our expert analysis and recommendations for workflow improvement. Our XMF workflow provides a pure PDF workflow with native JDF architecture for high performance, fidelity, and cross-media capability. Intelligent automation, integrated imposition, and easy-to-use color management help you maximize quality and throughput.

EDUCATIONAL SERVICES

Make an investment that gives all your employees — sales or production — the understanding they need to help you grow your business. We'll design a program that's tailored for your company's needs. We can help establish effective and on-going communication between your pre-press and pressroom departments. We can teach your sales team how to explain the benefits of color management or the differentiations that you provide to your customers with your equipment and processes — talk the talk and walk the walk.

www.fujifilmgraphics.com

FUJIFILM